

Future-Ready Design Built for Tomorrow's Healthcare Needs



Rapidly Expand Patient Access

Replace mobile PET/CT with a fully relocatable clinic that can double capacity within weeks of delivery



Cost Efficiency

Operates as an expense, not capital investment, quickly becoming cash-flow positive when patient demand is strong



Relocatable Design

Fully relocatable and non-permanent, allowing rapid response to changing patient volumes or market conditions



New Capabilities

Add theranostics or cardiac imaging services to generate new revenue streams and differentiate your program regionally



Seamless Installation

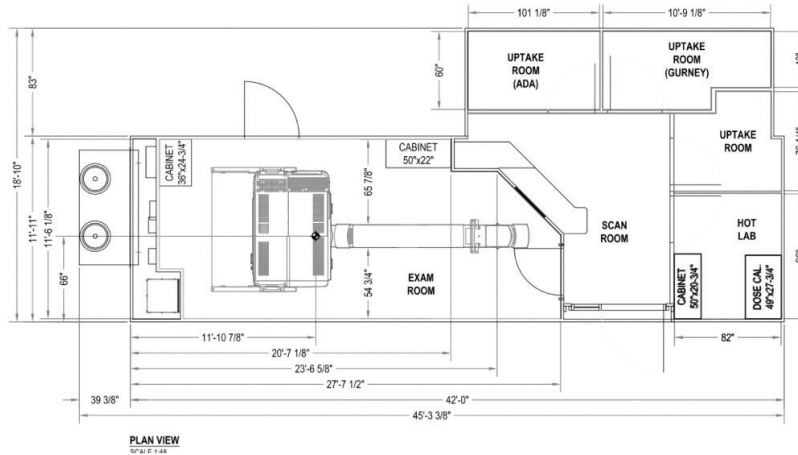
Delivered pre-commissioned for rapid setup on existing pads, enabling operations within weeks, not months



Enhanced Patient and Staff Experience

9-foot ceilings, natural light, and ergonomic design create a modern, efficient care environment





*Floorplan valid as of November 2025

Siting Requirements

Power Requirements

150 Amp minimum
480 Volt, 3-phase
WYE power connection

Overall Dimensions

45'-3 3/8" Length x 18'-10" Width x 10'-4" Height
8'-0" Interior ceiling

Overall Weight

45,500 lbs (includes PET/CT)

Includes

Wide Glass Entrance Door With Side Light

4'-0" glass door with (1) 1'7" side light

Spacious Control Room and Scan Room

11'-6 1/2" Width scan room

Uptake Rooms

3 standard, or 2 + 1 bathroom

Hot Lab

Hot Lab equipment, Hot Lab custom cabinet (1,500 lb load capacity, 45" W x 36" H x 28" D), and dose custom cabinet for (3) triple dose + (2) double dose containers 36" H x 46" W x 18" D

Camera and Communication System

Commercial interior camera and communication system for technologist to monitor patients in each of the (3) uptake rooms. Includes wiring to each room. Cameras will connect to a main monitor (22" LCD) in the control room. CCTV 4K HD cameras with 2.8mm lens and built-in microphone

LED Ambient Lighting

Included to enhance the interior environment. Covers the baseboard perimeter of the scan room and the control room

Construction Details

Heavy-duty Exterior Enamel

Akumin blue with 0.063" thickness

Emergency Exit

Emergency exit door - 3'-6" emergency exit and maintenance door located in the scan room

ADA Access

Gentle 1'-0" Height by 10'-0" Length ramp non-slip aluminum platform, and railing

Scan Room Shielding

Lead sheeting on exterior scan room walls (1/32"), control room partition wall (1/16"), and door on scan room entrance (1/16")

Uptake Room Shielding

Lead sheeting on exterior uptake room walls (1/16"), interior uptake room walls (3/8"), and door on uptake room entrance (3/8")

Maximum Capacity

10 people

Branding

Partial wrap with Akumin logo + health system branding

Custom Options - Not Included in Base Price

Bathroom

Installation of (1) bathroom with 36" W x 24" D locking lower cabinet with solid surface countertop, stainless steel sink, and toilet. Client is responsible for plumbing connections and waste management

Pergola Entrance Canopy

Fabrication and installation of aluminum pergola entrance with durable powdercoat finish. Includes canopy extending over the entrance with support beams and LED lighting. Aluminum panels with grey enamel installed around the entrance, 24"-30" W and 4" D



Ready to explore what's possible?
Get in touch axis@akumin.com

Future-Ready Design Built for Tomorrow's Healthcare Needs



Rapidly Expand Patient Access

Replace mobile PET/CT with a fully relocatable clinic that can double capacity within weeks of delivery



Cost Efficiency

Operates as an expense, not capital investment, quickly becoming cash-flow positive when patient demand is strong



Relocatable Design

Fully relocatable and non-permanent, allowing rapid response to changing patient volumes or market conditions



New Capabilities

Add theranostics or cardiac imaging services to generate new revenue streams and differentiate your program regionally



Seamless Installation

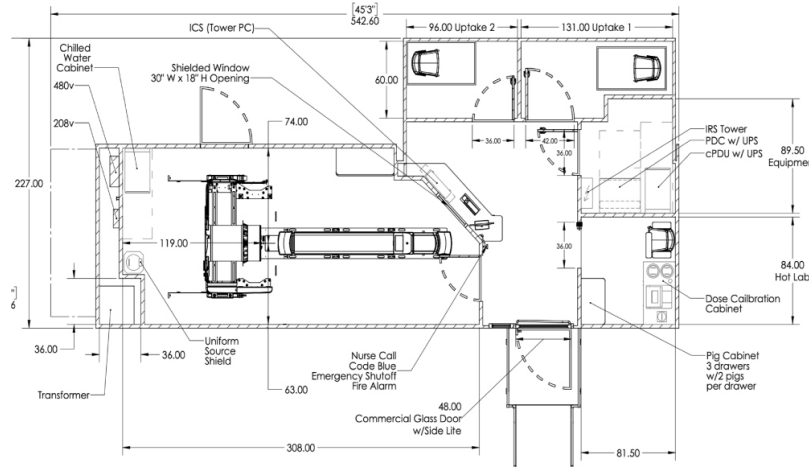
Delivered pre-commissioned for rapid setup on existing pads, enabling operations within weeks, not months



Enhanced Patient and Staff Experience

9-foot ceilings, natural light, and an ergonomic design create a modern, efficient care environment





*Floorplan valid as of November 2025

Siting Requirements

Power Requirements

150 Amp minimum
480 Volt, 3-phase
WYE power connection

Overall Dimensions

45'-3 3/8" Length x 18'-10" Width x 10'-4" Height
8'-0" Interior ceiling

Overall Weight

45,500 lbs (includes PET/CT)

Includes

Wide Glass Entrance Door With Side Light

4'-0" glass door with (1) 1'7" side light

Spacious Control Room and Scan Room

11'-6 1/8" Width scan room

Uptake Rooms

2 standard, or 1 + 1 bathroom

Hot Lab Room

Hot Lab equipment, Hot Lab custom cabinet (1,500 lb load capacity, 45" W x 36" H x 28" D), and dose custom cabinet for (3) triple dose + (2) double dose containers 36" H x 46" W x 18" D

Camera and Communication System

Commercial interior camera system for technologist to monitor patients in each of the (2) uptake rooms. Includes wiring to each room. Cameras will connect to a main monitor (22" LCD) in the control room. CCTV 4K HD cameras with 2.8mm lens and built-in microphone

LED Ambient Lighting

Included to enhance the interior environment. Covers the baseboard perimeter of the scan room and the control room

Construction Details

Heavy-duty Exterior Enamel

Akumin blue with 0.063" thickness

Emergency Exit

Emergency exit door - 3'-6" emergency exit and maintenance door located in the scan room

ADA Access

Gentle 1'-0" Height by 10'-0" Length ramp non-slip aluminum platform, and railing

Scan Room Shielding

Lead sheeting on exterior scan room walls (1/32"), control room partition wall (1/16"), and door on scan room entrance (1/16")

Uptake Room Shielding

Lead sheeting on exterior uptake room walls (1/16"), interior uptake room walls (3/8"), and door on uptake room entrance (3/8")

Maximum Capacity

10 people

Branding

Partial wrap with Akumin logo + health system branding

Custom Options - Not Included In Base Price

Bathroom

Installation of (1) bathroom with 36" W x 24" D locking lower cabinet with solid surface countertop, stainless steel sink, and toilet. Client is responsible for plumbing connections and waste management

Pergola Entrance Canopy

Fabrication and installation of aluminum pergola entrance with durable powdercoat finish. Includes canopy extending over the entrance with support beams and LED lighting. Aluminum panels with grey enamel installed around the entrance, 24"-30" W and 4" D



Ready to explore what's possible?
Get in touch axis@akumin.com