

Akumin AXIS®

1.5T MRI



High-Performance Imaging, Reimagined for Flexibility



Rapidly Expand Patient Access

Replace your mobile MRI with a fully relocatable clinic that can double capacity within weeks of delivery



Cost Efficiency

Operates as an expense, not capital investment, quickly becoming cash-flow positive when patient demand is strong



Relocatable Design

Non-permanent and fully relocatable, enabling flexible deployment as market needs or volumes shift



New Capabilities

Add Alzheimer's program or other advanced imaging to expand services and strengthen market differentiation



Seamless Installation

Delivered pre-commissioned for fast setup on existing pads, achieving full operational readiness within weeks



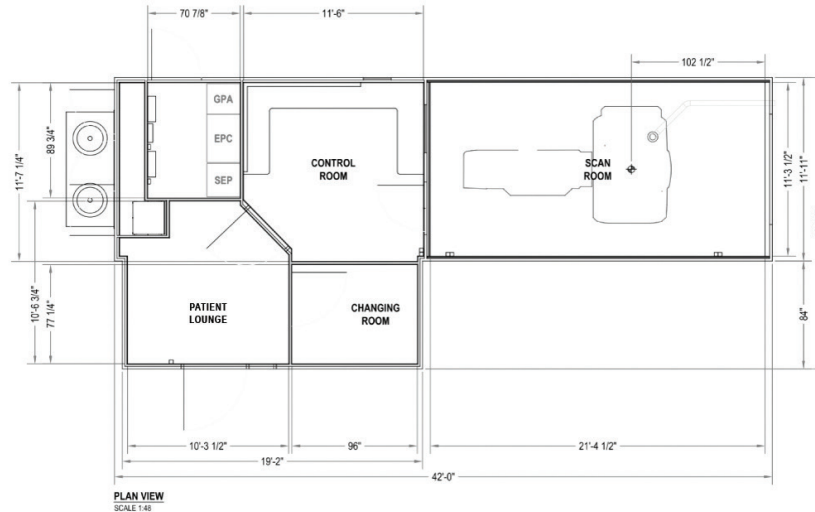
Enhanced Patient and Staff Experience

High ceilings, quiet AI-enabled MRI, and an ergonomic layout create a modern, efficient, and pleasant care environment



PATENTS PENDING

To learn more visit akumin.com/axis



Siting Requirements

*Floorplan valid as of November 2025

Power Requirements

150 Amp minimum
480 Volt, 3-phase
WYE power connection

Overall Dimensions

42'-0" Length x 18'-11" Width x 9'-0" Height
8'-0" Interior drop ceiling height

Overall Weight

45,000 lbs (includes MRI)

Includes

Wide Glass Entrance Door With Side Light

4'-0" glass door with (1) 1'7" side light

Patient Lounge

10'-3 1/2" x 10'-6 3/4", accommodating (2) patient chairs, and/or wheelchair

Changing Room

8'-0" Length x 6'-5 1/4" Width, with bench and personal storage lockers

Spacious Control Room

11'6" Length x 11'-7 1/4" Width

Spacious Scan Room

21'-4 1/2" Length x 11'-3 1/2" Width

LED Ambient Lighting

Included to enhance the interior environment. Covers the baseboard of the scan room, control room, and patient lounge

Construction Details

Heavy-duty Exterior Enamel

Akumin blue with 0.063" thickness

ADA Access

Gentle 1'-0" Height by 10'-0" Length ramp
non-slip aluminum platform, and railing

Maximum Capacity

10 people

Branding

Partial wrap with Akumin logo + health system branding

Custom Options - Not Included in Base Price

Bathroom

Installation of (1) bathroom with 36" W x 24" D locking lower cabinet with solid surface countertop, stainless steel sink, and toilet. Client is responsible for plumbing connections and waste management

Pergola Entrance Canopy

Fabrication and installation of aluminum pergola entrance with durable powdercoat finish. Includes canopy extending over the entrance with support beams and LED lighting. Aluminum panels with grey enamel installed around the entrance, 24"-30" W and 4" D



Ready to explore what's possible?
Email our team at axis@akumin.com