

Akumin AXIS®

# Drop Trailer



## Mobile Convenience, Fixed-site Experience



### Rapidly Expand Patient Access

Bring hospital-grade PET/CT imaging directly to communities, expanding access through a fully mobile care model



### Cost Efficiency

Realize revenue faster by avoiding construction delays, permitting challenges, or large capital investments



### Relocatable Design

Flexible deployment for hospital routes or regional coverage, easily repositioned to meet patient demand anywhere



### New Capabilities

Patent-pending drop-floor design lowers the trailer to ground level, enhancing patient accessibility while eliminating stairs and lifts



### Seamless Installation

Featuring the Siemens Biograph Trinion PET/CT, each unit is delivered pre-commissioned and fully operational in as little as one hour



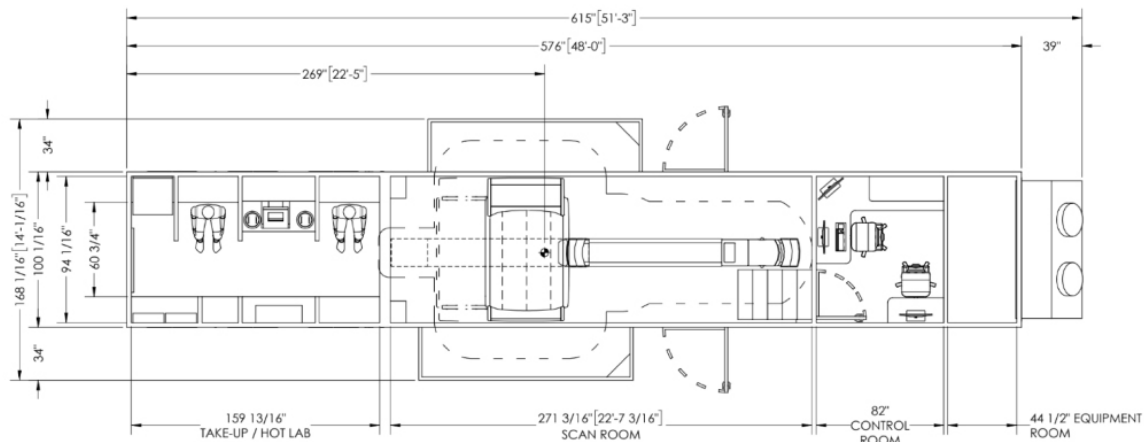
### Enhanced Patient and Staff Experience

Combines mobile convenience with fixed-site comfort, providing smooth, safe, and efficient imaging for every patient



PATENTS PENDING

To learn more visit [akumin.com/axis](https://akumin.com/axis)



## Siting Requirements

\*Floorplan valid as of November 2025

### Power Requirements

150 Amp minimum  
480 Volt, 3-phase  
WYE power connection

### Overall Weight

80,000 lbs (includes PET/CT)

### Overall Dimensions

51'-3" Length  
8'-4 1/16" Width  
14' 1/16" Width with slideouts opened  
12'-10" Height  
10'-10" Interior drop ceiling height

## Includes

### Wide Glass Entrance Door

3'-6" glass door

### Spacious Scan Room

14' 1/16" Width with slideouts opened

### Uptake Area

(2) custom vinyl uptake bench chairs with high-density foam on back, seat, and arm-rests

### Hot Lab Area

Hot Lab equipment, Hot Lab custom cabinet (1,500 lb load capacity, 45" W x 36" H x 28" D), and dose custom cabinet for (3) triple dose + (2) double dose containers 36" H x 46" W x 18" D

### Camera and Communication System

Commercial interior camera and communication system for technologist to monitor and speak to patients in each of the (2) uptake areas. Includes wiring to each area. Cameras will connect to a main monitor (22" LCD) in the control room. CCTV 4K HD cameras with 2.8mm lens and built-in microphone

### LED Ambient Lighting

Included to enhance the interior environment. Covers the baseboard perimeter of the scan room and ceiling uplighting in the uptake area

## Construction Details

### Heavy-duty Exterior Enamel

Akumin blue with 0.063" thickness

### Emergency Exit

Emergency exit door - 3'-6" emergency exit hatch located in the operator control room

### ADA Access

Gentle 8" Height by 8'-0" Length ramp  
non-slip aluminum platform, and railing

### Scan Room Shielding

Lead sheeting on exterior scan room walls (1/32"), control room partition wall (1/16"), and door on scan room entrance (1/16")

### Uptake Room Shielding

Lead sheeting around the uptake room chairs (1/16"), and lead lined door on uptake room entrance (1/16")

### Maximum Capacity

10 people

## Custom Options - Not Included in Base Price

### Backlit Ceiling Panels

Installation of LED ceiling panels in the scan room directly above PET/CT

### Exterior Window in Control Room

Installation of (1) exterior window in technologist control room area

### Video Screens in Uptake Area

Installation of (2) 24" display monitors for patient experience during uptake process

Ready to explore what's possible?  
Email [axis@akumin.com](mailto:axis@akumin.com)