

FOR INTERNAL USE ONLY

# New Credit Card Policy



## New credit/debit card policy

In accordance with industry practices and used by many other healthcare providers



## Your credit card data is secure

Held by our transaction processor and safeguarded by protocols and security measures



## Amount collected is an estimate

Provided to us by your insurance company

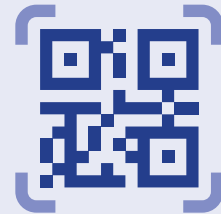


## Insurance data can be inaccurate

We are reliant on the data provided by your insurance



## The new policy will allow for faster refunds



## QR Code with further information

Use your phone's camera to scan the QR code which will give you more information on this policy

### Notes for Front Desk

#### Credit/debit card not required for:

- Straight government plans (Medicare, Medicaid, Tricare)
- Medicare Advantage/Replacement plans are okay to take credit/debit cards
- Cash-pay patients
- Check-pay patients
- Self-pay patients
- Workers Comp
- Personal Injury/Auto
- Research
- Direct/Client Bill



SCAN ME

Effective Date: December 17, 2020  
Website: [akumin.com/billing/policies](http://akumin.com/billing/policies)

